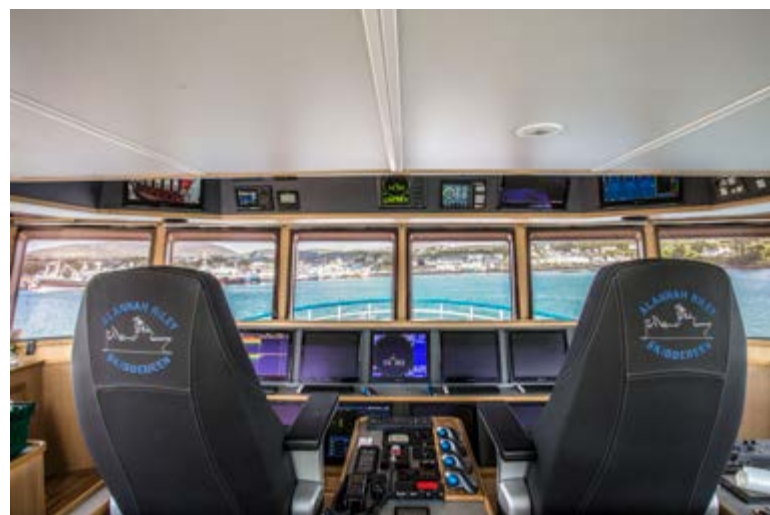




Fish hold.



Skippers helm.



Galley.



VCU fish washing system.

The dipping machine is equipped with a 9-compartment drum each with a capacity of 63 litres. This drum rotates and ensures that each section with langoustines stays in the preservative bath for 8- to 15 minutes depending on the setting. The 4-compartment washing machine can also be used for processing fish.

After conservation, the langoustines are again transported through the inside of the drum to the packing table that is also provided with a conveyor belt. At this table, the langoustines are then packed in various gradings in 3 kilos boxes. These boxes are immediately frozen on board in one of the 2 Blast freezing rooms arranged on the main deck using blast freezer units are supplied by Andrew Conaghan, AJC (GEA Refrigeration Irl Ltd.)

The 2-compartment washing machine is used for processing the "fish" by-catch. The fish then goes directly to the fish hold room for storage in boxes using ice supplied by the onboard Geneglance 2,5 ton/24h ice maker.

**Electronics**

Barry Electronics Ltd installed the Alannah Riley's bridge equipment over a period of 2 months in Hvide Sande.

For ground discrimination, the ship is fitted with equipment from Furuno and WASSP. The Furuno multi beam, Omni directional FSV-84 sonar has been installed to give the Skipper solid information on the bottom type of the ground ahead of the ship and all around the ship. The 80Khz WASSP multibeam swath echosounder has been installed to map the seabed depth and bottom hardness.

A precision Motion reference unit has been fitted with the WASSP to provide extremely accurate motion reference data to the WASSP, giving much more accurate bottom maps. The latest Furuno Chirp echosounder, the FCV 1900, has been installed. This new model echosounder is the first in Ireland using multi frequency transmission sweeps or CHIRP technology to provide high definition echo detection not possible with conventional echosounders.

For navigation the ship is fitted with the latest model radars, GPS navigators and AIS from Furuno. The main radar, FAR 1518 is fully type approved. It can be controlled with a conventional control panel or with a standard trackball for ease of use. It comes with groundbreaking



Gutting and sorting station with conveyor from stern hoppers.

features such as Target Analyzer allowing the user to spot hazardous targets simply by their colour and Automatic Clutter Elimination (ACE) for unprecedented echo clarity.

The ship has the usual suite of GMDSS radios etc. For shore communication and crew welfare the ship is equipped with Barry Electronics own Vsat Internet access system. This is now essential on modern fishing boats for always on Internet access, email, crew welfare and managing the ship. Barry Electronics system delivers complete system control to the owner/Skipper allowing the system's use to be defined by the owner. A backup INMARSAT phone has also been installed.

For deck and ship safety, Barry Electronics have installed the most sophisticated CCTV seen on an Irish fishing boat. Using IP technology the system has 14 cameras and any or all cameras can be displayed on any of five



Trawl control station

monitors improving the safety of the fishing operation and allowing the Skipper to oversee the complete fishing operation from catching to processing.

The electronics package for the

vessel includes:

- Navigation**
- Furuno FAR1518 Radar
- Furuno M1835 Radar
- 2 off Sodena Turbo Win Chart Plotter

**CASTLETOWNBERE Fishermen's Co-Operative Society Ltd.**

- Fuel supplies
- Fish sales
- Retail
- Wholesale

**Congratulations & Good Fishing Ross, David, Neil, families & crew on the "Alannah Riley".**

Castletownbere, Co. Cork, Ireland.  
T: (027) 70045 / 70283. F: (027) 70194. E: info@ctfishcoop.eu

*Murphy's of Castletownbere*

**SuperValu**

**Real Food, Real People**

Murphy's would like to congratulate Ross, David, Neil, their families and crew on their new vessel "ALANNAH RILEY".

**O'SHEA'S BAR**

THE SQUARE, CASTLETOWNBERE, CORK | Tel: 027-70600

*Alannah Riley*

**Congratulations to Ross, David and Neill, Families and Crew of the Alannah Riley From Betty, Christina and Kieran.**

**Congratulations to Ross, David, Neil, their families & Crew with the "Alannah Riley".**

**THYBORON TRAWLDOOR.DK**

Address: THYBORON TRAWLDOOR, Sydvestens 8, DK-7880 Thyborøn, Denmark  
Telephone: 0045 9793 1822 Fax: 0045 9793 2313  
E-mail: haw@thyboron-trawldoor.dk Website: www.trawldoor.dk

**SWAN NET GUNDRY**

**Wishing every success and safe fishing to Ross, David, Neil, Families & Crew on the delivery of Alannah Riley from all at Swan Net Gundry Ltd**

Contact Swan Net-Gundry depots nationwide for information on products and prices available on a comprehensive range of Pelagic Trawls & Bottom Trawls, Safety Equipment & Electronics and Chandlery.

**Tel: 00353(0)74 9731180 Email: enquiries@swannetgundry.com**  
**www.swannetgundry.com**

Furuno GP-170 GPS  
 Furuno GP-33 GPS  
 Furuno FA-170 AIS  
 Furuno SC-50 Sat Compass  
 Simrad AP-70 with dual control

**Acoustic equipment**

Furuno FSV-84 sonar  
 Furuno FSV-1900B CHIRP echosounder  
 WASSP 80Khz multi-beam echosounder with SMC Motion Reference Unit

**Communication**

Sailor 6000 MF/HF DSC radio  
 Sailor 6126 VDF DSC  
 Sailor 6210 VHF  
 Jotron EPIRB and SART  
 2 off ICOM GM-1600 hand-held radio  
 Furuno NX-300 Navtex receiver  
 BEL VSAT Satellite Communication system  
 Sailor Fleet One Satellite Phone  
 Phontech Intercom system

**Other Equipment**

BEL IP CCTV system  
 Intellian 60cm Sat TV.

Alannah Riley will land their catch to Castletownbere Fisherman's Co Op and the vessel is insured by D&D insurance.

Noel O' Regan, Promara acted as consultant for the owners and Art Kavanagh helped with the finance provided by AIB.

Speaking to The Skipper at the launch party in the Beara Coast Hotel, Skipper Ross Minihane was full of praise for all who contributed to the new vessel

"From the Shipyard workers and suppliers to the local companies and our crew and our families, we have been overwhelmed with the support for this new vessel"

"On behalf of myself, David and Neillie, I would like to say a big "Thank you" to everybody who has contributed to the "Alannah Riley" and especially our families and crew who have given us so much support over the years.

The Alannah Riley, skippered by Ross Minihane and Patrick Diver will join the Minihane's other vessels Sarah David, Dawn Ross and Ocean Venture II in their homeport of Castletownbere.

The Skipper would like to wish Ross, David and Neil Minihane, Their Families & Crew all the best for the future with the Alannah Riley and good fishing!



Wheelhouse Floor Compass Rose.



Trawl Deck.



The Minihane family gathered for the official blessing and launch.

**Barry Electronics Ltd.**

**bel VSAT**  
**FURUNO**  
**SIMRAD**  
**SAILOR** Thrane & Thrane **SODENA**

Congratulations to the Minihane Family on the launch of their new vessel Alannah Riley. Barry Electronics are delighted to supply, install and commission the vessels navigation, fish finding and communications equipment.

**Order Online: [www.barryelectronics.ie](http://www.barryelectronics.ie)**  
**St Catherines Rd, Killybegs, Co. Donegal**  
**Tel: 074 9731215 Fax: 074 9731739**

**D&D Insurances Limited**

**Congratulations and Best Wishes to Ross, David, Neil, their families and Crew on the "Alannah Riley".**

**D&D Insurances Ltd**  
 Block A - Unit 3, Nutgrove Office Park, Rathfarnham, Dublin 14.  
 Main line: 01 20 514 05 Fax: 01 20 513 57  
 E-mail: [barry@ddinsurances.ie](mailto:barry@ddinsurances.ie) [mark@ddinsurances.ie](mailto:mark@ddinsurances.ie)

"D&D Insurances Ltd is regulated by the Central Bank of Ireland"

**VCU**  
 The Maritime Specialist

**Best wishes to Ross, David, Neil, families & Crew on your new vessel "Alannah Riley"**

**VCU TCD BV**  
**tel: +31 527 686 280 | email: [tcd@vcu.nl](mailto:tcd@vcu.nl) | web: [www.vcu.nl](http://www.vcu.nl)**  
**ANOTHER VESSEL WITH OUR VCU CATCH PROCESSING SYSTEMS**